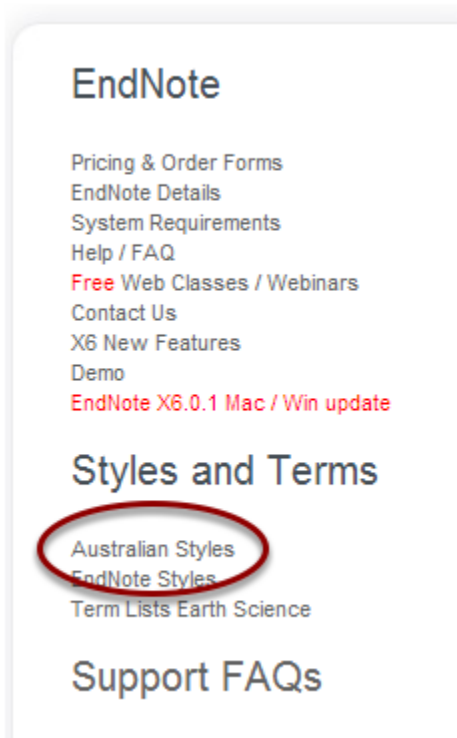


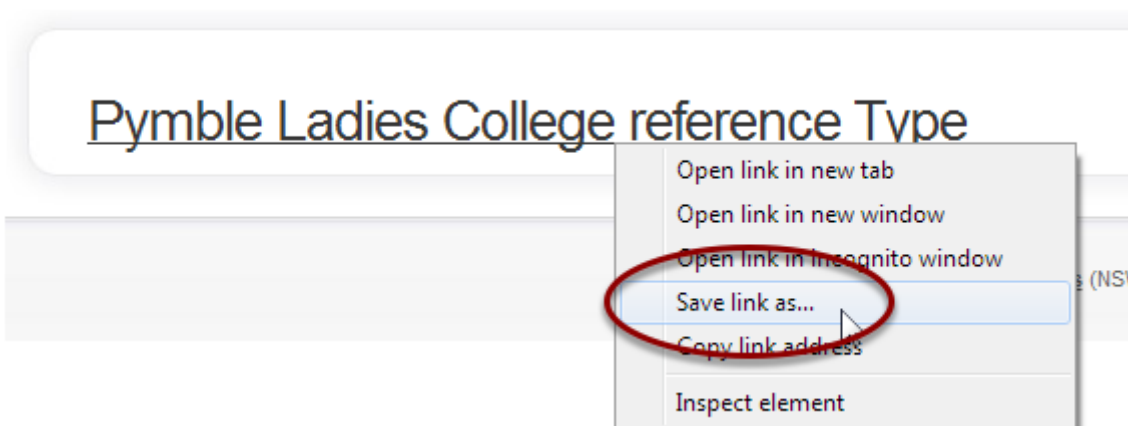
## Enter <http://www.crandon.com.au/> in your browser

Follow the link on the left column Styles and Terms and click on Australian Styles

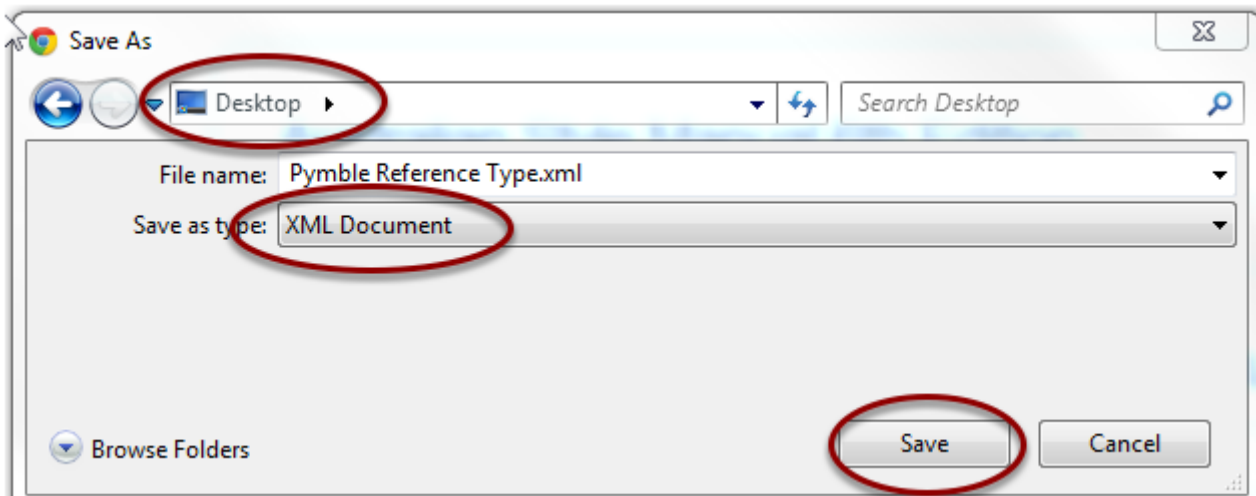


## Right click on the link to Pymble Ladies College reference type

Select Save link as...

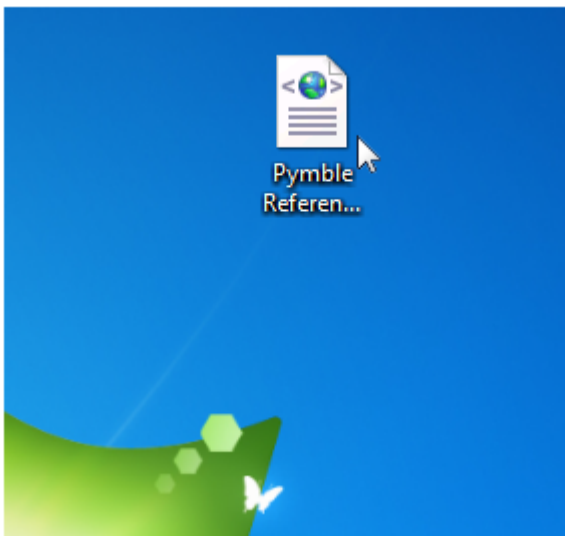


## Save the Pymble Reference Type.xml to the Desktop



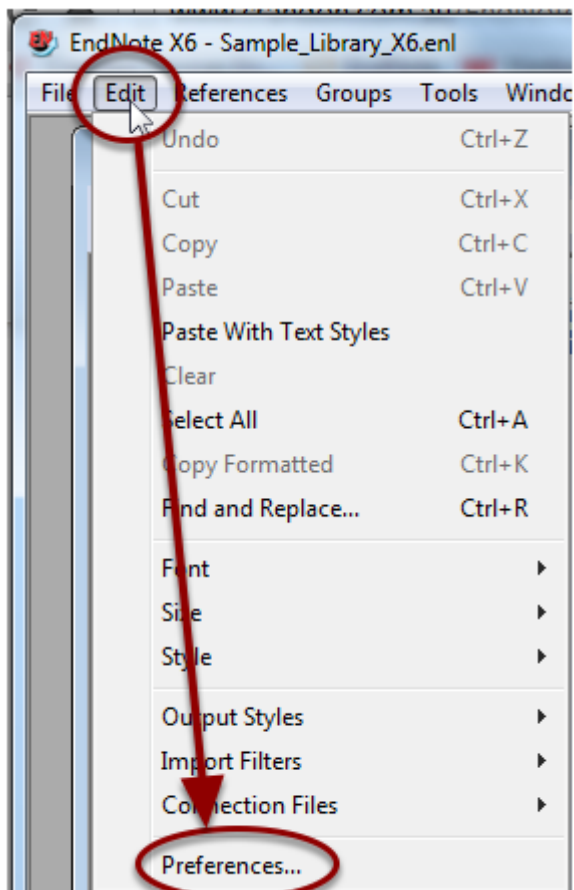
## The file should appear on the Desktop

If successful you can now import the reference types into EndNote.



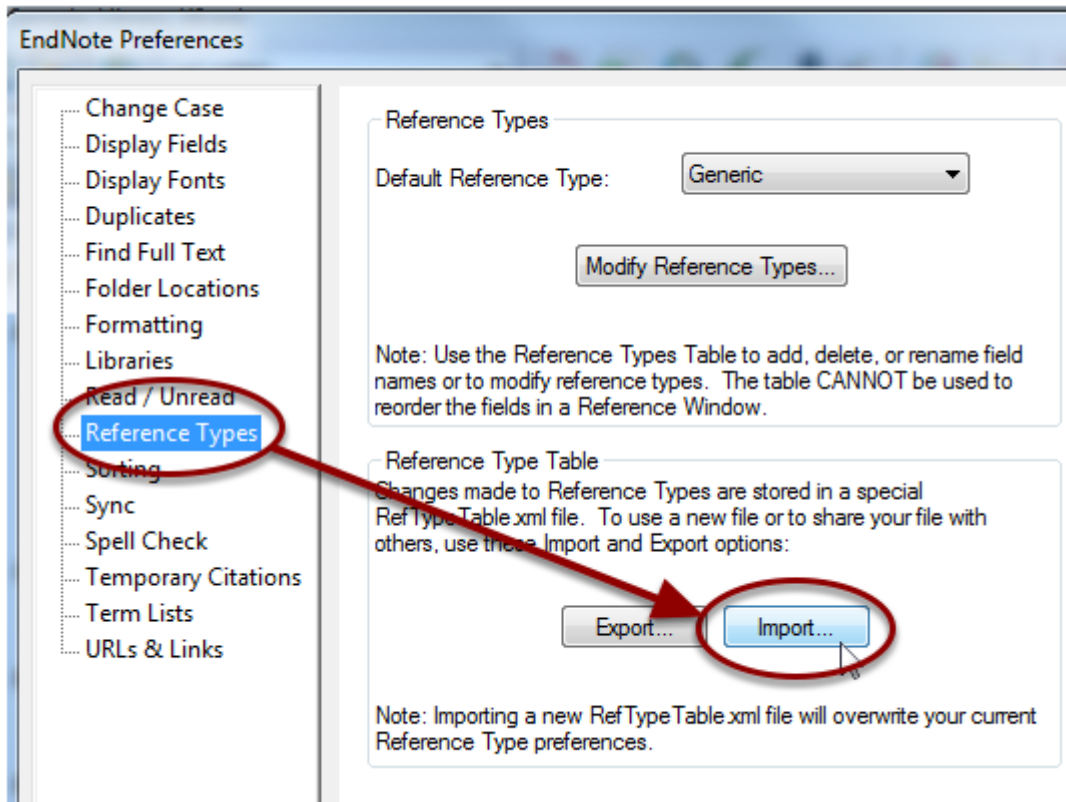
## Open EndNote

Select the Edit Menu > Preferences...



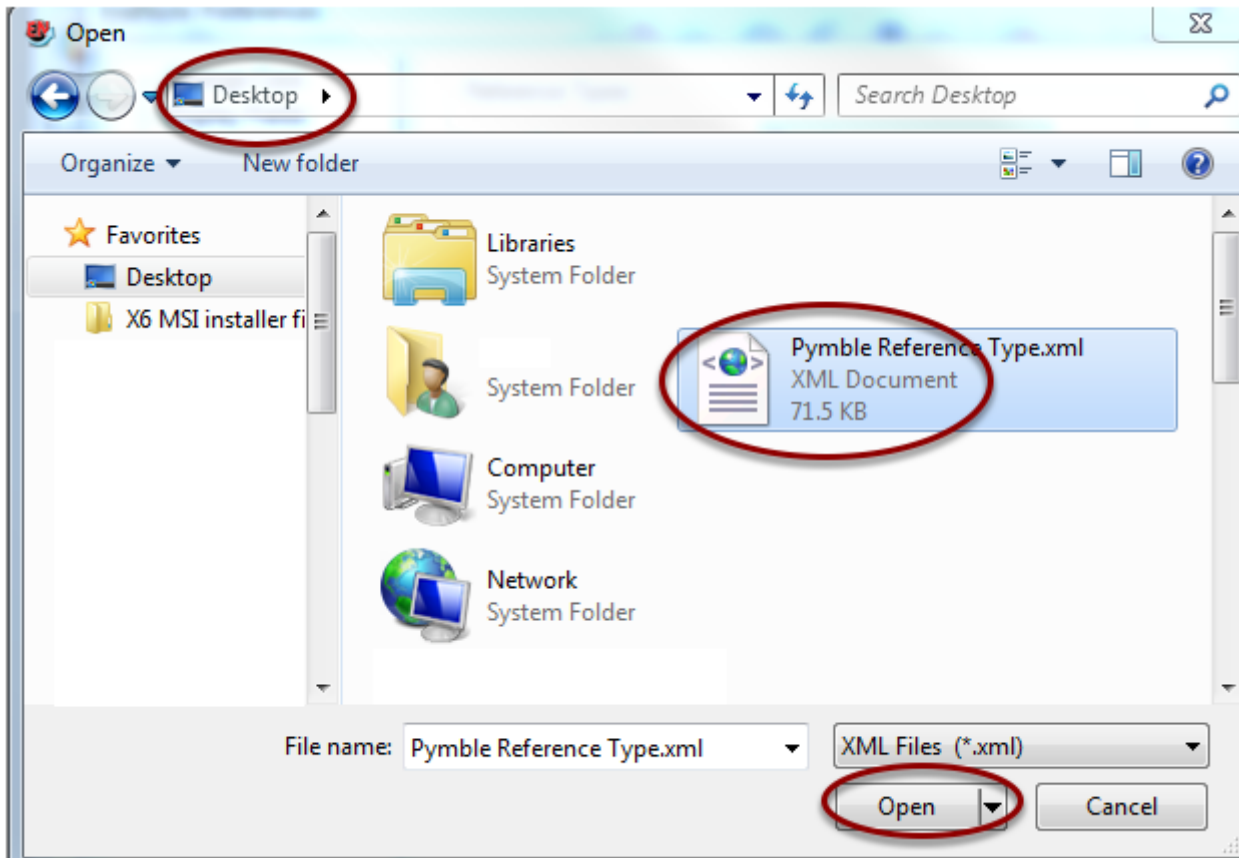
## EndNote Preferences

Select Reference Types from the left column and then select the Import... button.

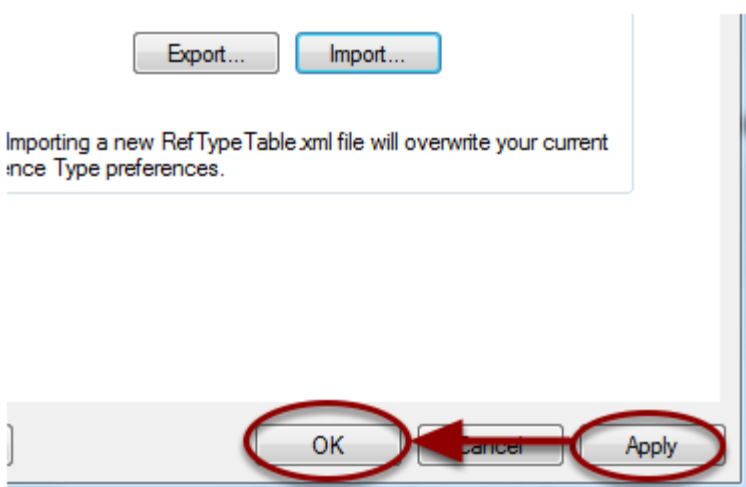


## Import from the desktop

Navigate to the desktop and select the Pymble Reference Type.xml file

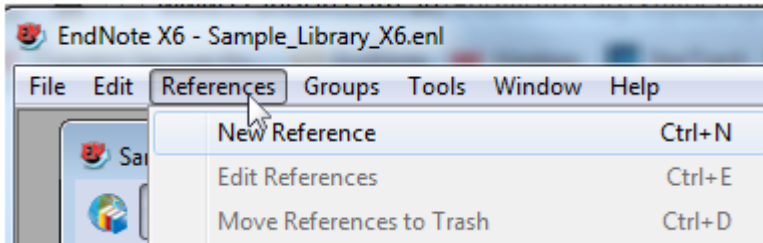


Click Apply then OK in the EndNote preferences window.



## To check the import

Select the References menu in EndNote > New Reference or Ctrl+N



## Reference Type

In the Reference Type dialogue box you should see a short list of only 10 reference types.

